

Thermal Imaging Camera

IRTE Series

HIGHEST RESOLUTION AND ACCURACY
WITH LOW COST



IRTE Series

Low cost and easy to use.

Great for control cabinets, Installations and Maintenance.


Images shew in real time.

Up to 2000 images stored with temperature data. Analytic

software export report to word format.

amperis

www.amperis.com

 AMPERIS PRODUCTS S.L
Agricultura,34
27003, Lugo, Spain

 Contact

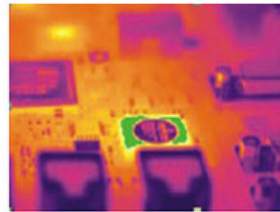
+T [+34] 982 20 99 20 | F [+34] 982 20 99 11
info@amperis.com | www.amperis.com

IRTE series is a special low cost real-time IP camera in 160×120 resolution. It combines the traits of economical practical and portable. The camera symbolizes easy-to-use, standard and professional, developing for those applications that need instant infrared troubleshooting in power plant, petrochemicals, scientific research, firefighting, and building inspection, metallurgy, etc...

IRTE Series – Low cost and easy to use



Optional Lenses



Color Warning



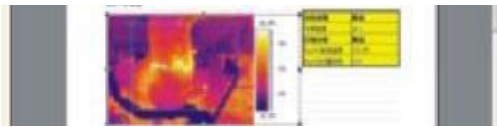
Built-in Microphone



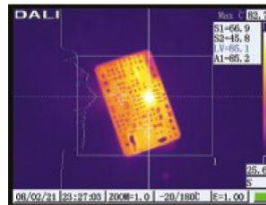
Interface



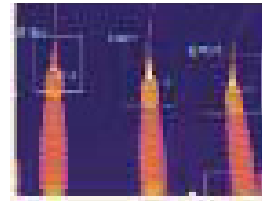
Laser Pointer



Free Analysis Software



Line Measurement



Area Measurement



Low power consumption, 3 hours continuous operation

Technical parameters

	IRTE	IRTE-W	IRTE-P	
Detector characteristics	Detector type	Uncooled FPA microbolometer		
	Array size/format	160×120		
Image manage	Field of view/min focus distance	18o×13o /0.3m		
	Spatial resolutions(IFOV)	1.9mrad		
	Thermal sensitivity	≤0.05°C@30°C		
	Frame rate	60HZ	50/60HZ	
	Focus	Manual		
	Electric focusing	N/A	2X	
	Spectral range	8 a 14µm		
Image display	LCD display	2.5" TFT color LCD, 640×480		
	Image adjustment	Auto/manual gain and brightness		
	Color palette	3 palettes changeable	11 palettes changeable	
Measurement	Temperature ranges	-20°C~+350°C	-20°C~+350°C (can expand to 600°C)	
	Accuracy	±2°C or ±2% of reading, whichever is greater		
	Measurement correction	Automatic/manual		
	Measurement mode	Movable spots. Movable areas (maximum, minimum and average temperatures).	Up to 4 movable spots. Up to 3 movable areas (maximum, minimum and average temperatures). Up to 2 movable lines. Line profile. Isotherms. Temperature difference. Alarm (voice, color)	
	Setup functions	Date/time, temperature unit, language		
	Emissivity correction	Variable from 0.01 to 1.0		
	Background temperature correction	Automatic correction according to user input		
	Atmospheric transmission correction	Automatic correction according to user input object distance, humidity and temperature		
Image storage	Storage Card	Built-in flash memory, Up to 1000 images		Built-in flash memory, up to 2000 images
	Storage mode	Manual single file saving, IR and Visual image link saving		Automatic/manual single file saving, IR and Visual image link saving
	Thermal file format	JPEG with original thermal measurement data		
	Visual file format	JPEG		
	Voice annotation	N/A	A built-in microphone Up to 40 seconds of digital voice clip with each cared thermal imaging	
Laser pointer	Laser pointer	Class 2,1mw/635nm(red),IEC 60 285		

Power supply	Battery type	Li-Ion, rechargeable	
	Battery operating time	3 hours continuous operation	4 hours continuous operation
	Charging system	Intelligent charger or power supply adaptor 12V (optional) to random charge	
	Power saving	Auto dormancy and auto-shut down	
Environment	Operating temperature	-15 °C - +50 °C	
	Encapsulation	IP54	
	Humidity	≤ 95% non-condensing	
Physical characteristics	Weight	0.6kg	
	Dimensions	250mm×100mm×72mm	
	Handrail	Can be installed on both sides	
	Tripod	1/4" -20-UNC	
Interface	External DC input	N/A	Yes
	Video output	N/A	Yes
	USB	USB2.0 Image, measurement data transfer	