

LOW COST, ACCURACY MAXIMUM




THERMAL CAMERA

## IRDL700E+

The camera IRL700 E + has the uncooled microbolometer  
384 × 288 focal plane array (FPA)

amperis

[www.amperis.com](http://www.amperis.com)

 AMPERIS PRODUCTS S.L  
Agricultura,34  
27003, Lugo, Spain

 **Contact**

+T [+34] 982 20 99 20 | F [+34] 982 20 99 11  
[info@amperis.com](mailto:info@amperis.com) | [www.amperis.com](http://www.amperis.com)

## Features:

1. The camera IRDL700 E + has the uncooled microbolometer  $384 \times 288$  focal plane array (FPA) system combined with real time processing of high-speed DSP image to give a stable and well-defined infrared.
2. The imager IRDL700 E + technology has the most advanced temperature measurement which involves accurately measure temperatures available.
3. Autofocus function with the touch of a button.
4. Temperature measurement in real time, the camera has convenient features but intuitive handling is easy and intuitive.
5. Recording of voice messages in each recorded image, this recording can be attached to the image within the camera and software download. The duration of voice notes is 40 seconds.
6. Lithium batteries which ensure long battery life.
7. The camera has a compact design and ergonomic handle with one hand all functions. The menu operation is very intuitive.
8. Laser pointer.
9. Screen of 640x480 pixels.

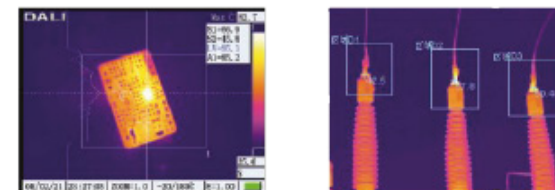
10. 1 GB flash memory, up to 2000 images.
11. Video out (VGA), USB port for connecting to PC, the flash card can also connect to PC for downloading images and can also be used to update the camera firmware.
12. Autofocus function. Continuous digital zoom 1:8.
13. Automatic gain control image contrast and brightness is adjustable blade automatic or manual.
14. Real-time temperature of 4 points
15. Thermal analysis of the points corresponding to a line that you draw on screen.
16. Real-time measurement of the maximum temperature, minimum and average of an area. Size and position of the adjustable area.
17. Automatic temperature correction.
18. Selectable provision of the alarm temperature.
19. Selectable temperature range.
20. The images and voice recordings can be played on the camera in addition to the software that came together.



One button operation



Optional Lenses



# Parameters

<b>DETECTOR</b>	
Detector	Uncooled (FPA), microbolometer
Detector Material	Amorphous silicon
Thermal sensibility	0.06°C@30°C
Resolution	384×288
Spatial resolution (IFOV)	0.88 mrad
Spectral range	8-14µm

<b>LCD</b>	
LCD Type	Color LCD
Framerate	50/60Hz
Size	4" LCD
Built-in visual camera	300,000 pixels
Color palette	11

## CAMERA

Field of view/Min. focus distance	16°×12°/ 0.5m
Laser pointer	Clas 2 ,1mw/635nm red
Electronic Zoom	Autofocus, 8×continuos

## TEMPERATURE

Temperature range	-20°C~+600°C; -20°C~+2000°C (optional)
Accuracy (% of reading)	±2°C or ±2% of reading (whichever is greater)
Measurement mode	Up to 10 movable spots. Up to 5 movable areas (max. temperature, minimum y average). Line profile Isotherm. Temperature difference. Alarm (Voice, color)
Image adjustment	Auto/Manual gain and brightness
Setup Functions	Date/Time, temperature unit, language

## MEMORY

Image	Flash memory of 1 GB (3000 images)
Voice notes	40 segundos/per image

## ENVIRONMENT

Operation temperature	-15°C +50°C
Humidity	≤90% non condensing

## INTERFACE

USB	USB
Video output	PAL/NTSC/VGA
Audio output	Yes

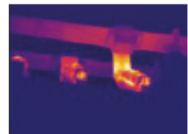
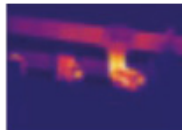
## POWER SUPPLY

External power	7.5-9V DC
Battery operation time	Rechargeable Li-ion batteries , 2 hours continuous operation

## WEIGHT AND DIMENSIONS

Weight	1.69kg (including batteries and lenses)
Dimensions	248mm×130mm×130mm


Laser Pointer  
and photos



Auto Focus



Optional LCD remote  
units

 AMPERIS PRODUCTS S.L  
Agricultura,34  
27003, Lugo, Spain

 **Contact**

+T [+34] 982 20 99 20 | F [+34] 982 20 99 11  
info@amperis.com | www.amperis.com

# Features

---

- 1 - Adopting 320×240 FPA advanced un-cooled detector; combined with high speed DSP real time image processing system to put up the well defined and stable infrared thermal images.
  - 2 - In possessing of advanced world standard temperature measurement technology, whether for on site temperature measurement or playback image temperature measurement the high standard temperature measurement accuracy has been achieved.
  - 3 - Providing single key touch off infrared image auto focus function.
  - 4 - Built in quick acting operation system, powerful functions and easy to extend; real time temperature measurement for convenience use.
  - 5 - The Voice annotation is playable in local camera or in the software, each image can add on 40 seconds voice annotation.
  - 6 - Built in dedicated Li-Lon batteries to ensure continuous on site power supply.
  - 7 - Integrated portable design offers the compactness and light weight; Optimized functions keys design to allow single hand operation for all functions; multilayer menu for intuitive and simple operation.
  - 8 - In possess of picture in picture function to allow infrared image and visual picture display synchronously; combined with the laser pointer for easy target search.
  - 9 - 300.000 pixels CCD picture display; store and play back available as well as thermal image convertible.
  - 10 - Built in 64M FLASH and extendable 512M CF card for easy and flexible image storage. Store up to 3,000 images with temperature data.
  - 11 - VGA output available for connect with standard VGA monitor; standard USB for connect with PC and transfer images in FLASH and CF card into PC and also to implement infrared camera upgrading.
  - 12 - Auto focusing, 1-8 times continuous step less thermal image enlarge function.
  - 13 - Auto image gain control; brightness, contrast and palette is adjustable auto or manual.
  - 14 - 4 crosshairs real time temperature synchronously display.
  - 15 - Thermal image liner analysis in any direction at site.
  - 16 - Real time area max., min. or average temperature measurement; auto tracking max. or min. temperature in the area , display the point's position and temperature. The area size and position is adjustable.
  - 17 - Auto self-determined temperature correction.
  - 18 - Selectable alarm temperature setup.
  - 19 - Any preset temperature range is displayed in bright color.
  - 20 - Images and voice annotation can play back in the camera and can be used to analysis temperature by DALI PC end software included in the package.
-

## Standard accessories

The DL700E system is delivered in a transport case. The system comprises:


- DL700E camera
- External 640X480 digital LCD, LCD cable, LCD bracket
- BPL-950 batteries (2)
- Battery Changer
- Headphone
- 512M CF-Card
- Reader
- Reader drive CD
- USB cable to reader
- Reader installation manual
- Video cable
- Audio cable
- USB cable to camera
- DL700E operator's manual
- Thermal Images Analysis Report Software, DL-Reporter
- Carry case
- Shoulder strap



## Optional accessories

Lenses



 AMPERIS PRODUCTS S.L  
Agricultura,34  
27003, Lugo, Spain

 **Contact**

+T [+34] 982 20 99 20 | F [+34] 982 20 99 11  
info@amperis.com | www.amperis.com