

IRTE Series

Low cost, small size




Thermographic infrared camera IRTE

IRTE Series

160×120 Uncooled FPA detector
Low cost
Small size
50HZ real-time measurement
Optional lenses
Color/Voice alarming

amperis

www.amperis.com

 AMPERIS PRODUCTS S.L
Agricultura,34
27003, Lugo, Spain

 **Contact**

+T [+34] 982 20 99 20 | F [+34] 982 20 99 11
info@amperis.com | www.amperis.com

IRTE series is a special low cost real-time IP camera in 160×120 resolution. It combines the traits of economical practical and portable. The camera symbolizes easy-to-use, standard and professional, developing for those applications that need instant infrared trouble-shooting in power plant, petrochemicals, scientific research, fire fighting, and building inspection, metallurgy, etc...

Thermographic infrared camera IRTE

Laser pointer



Color warning



Beep

Alarm voice

40s digital voice per image stored

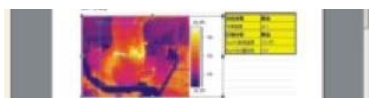


Low power consumption, 3 hours of continuous operation

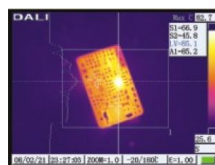
Laser pointer



Manual Lens



Free analysis software



Line Measurement



Area measurement



Optional Lens

TECHNICAL SPECIFICATIONS



	Item	IRTE	IRTE-P
Detector characteristics	Detector type Array size/format	Uncooled FPA microbolometer 160x120	
Image manage	Field of view/min focus distance Spatial resolutions(IFOV) Thermal sensitivity Frame rate Focus Electronic zoom Spectral range	18°×13°/0.3m 1.9mrad ≤0.1°C@30°C 60Hz Manual NA 8-14μm	50/60 Hz 2X
Image display	LCD	Built-in high-resolution color 2.5?LCD	

	Item	IRTE	IRTE-P
Measurement	Temperature ranges	-20°C- +350°C	-20°C~+350°C,optional up to +600°C
	Accuracy	±2°C or ±2% of reading, whichever is greater	
	Measurement correction	Automatic/manual	
	Measurement mode	Movable spots. Movable areas(maximum, minimum and average temperatures). Isothem. Alarm(voice,color)	Upto 4 movable spots. Up to 3 movable areas(maximum, minimum and averagetemperatures).Line profile. Isothem. Temperature difference. Alarm(voice,color)
	Color palette	3 palettes changeable	11 palettes changeable
Image storage	Image adjustment	Auto/manual gain and brightness	
	Setup functions	Date/time, temperature unit, language	
	Emissivity correction	Variable from 0.01 to 1.0 or select from listings in pre-defined material list	
	Ambient temperature correction	Automatic correction according to user input	Automatic correction according to user input object distance, relative humidity, ambient temperature
	Atmospheric transmission correction	N/A	
Image storage	Storage Card	Built-in flash memory, Up to 1000 images	Built-in flash memory, up to 2000 images
	Storage mode	Manual single image saving	Autmatic/manual single image saving
	File format-thermal	JPEG,14 bit thermal image with measurement data	
	Voice annotation	N/A<	Input via built-in microphone Up to 40 seconds of digital voice per image stored with image

	Item	IRTE	IRTE-P
Laser pointer	Laser pointer	Class 2,1mw/635nm(red)	
Power supply	Battery type Battery operating time Charging system Power saving External power	Li-Ion,rechargeable 3 hours continuous operation Intelligent charger YES N/A	Intelligent charger or power supply adaptor (optional)online charde 10-ISV DC
Environment	Operating temperature Humidity Encapsulation	-15°C-+50°C ≤90% non-condensing IPS4	
Physical characteristics	Weight Dimensious	0.91Kg 303mmx123mmx80mm	
Interface	External DC input Audio output Video output USB	N/A N/A N/A Image,measurement data transfer to PC	Sim Sim PAL/NTSC Image,measurement data and voice transfer to PC